



CRUSHER - SHREDDER

The SFH metal shredders allow an optimal reduction of your machining waste for a better recovery of the chips in order to their valorization in recycling channel.

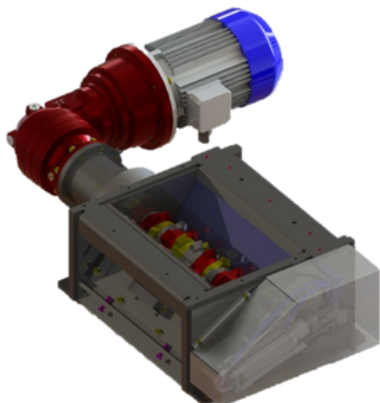


Reduces the volume of waste, thus limiting CO2 emissions by reducing rotation and transport costs. Increases productivity and performance over time.



CARACTERISTICS

- Equipped with removable knives mounted on a splined shaft
- Shaft driven by a double angular gear motor which allows an optimal reduction
- Lower part equipped with grids to calibrate the shredded waste
- All types of materials (aluminum, titanium brass, etc.)



BENEFITS

- Space saving
- Robust and simple construction
- Simple maintenance
- Rapid return on investment
- Enables the densification of the chips
- Detection and ejection of external components
- Heavy duty / Long service life

OPTIONS

- Automatic lubrication
- Fluid filtration
- Centralized systems
- All types of chips (wire, pellets, etc.)

Operation of the metal shredder

<https://www.youtube.com/watch?v=4J1nHNo164s>

1

Step 1

The chips drop onto the splined shaft allowing it to have a significant reduction

2

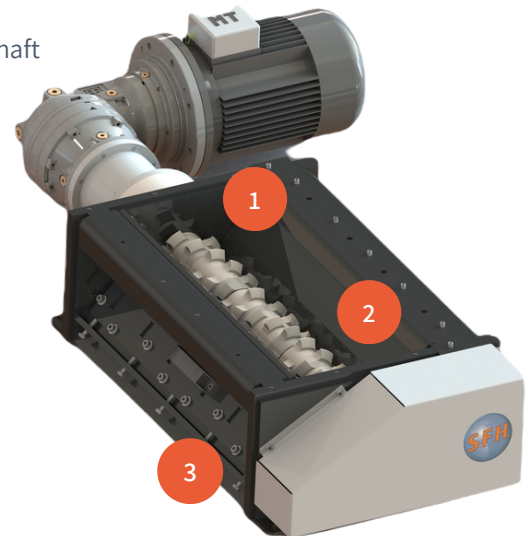
Step 2

The chips are cut between the fixed combs mounted on the crusher and the knives of the shaft

3

Step 3

The grids under the rotor allow the shredded chips to be calibrated



OUR MODELS

Single shredder*:

- BCE200 - Capacity from 40 to 60kg/h
- BCE400 - Capacity from 80 to 120kg/h
- BCE600 - Capacity from 300 to 450kg/h

Double shredder*:

- DBCE400 - Capacity from 160 to 240kg/h
- DBCE600 - Capacity from 600 to 900kg/h

* The size of the crusher depends on the shape, moisture content and material used.

Visit our website for a complete list of our products and for more information.

Website : www.sfh.fr
Email : accueil@sfh.fr
Phone : +33(0)47 792 19 92

