



# CRUSHER

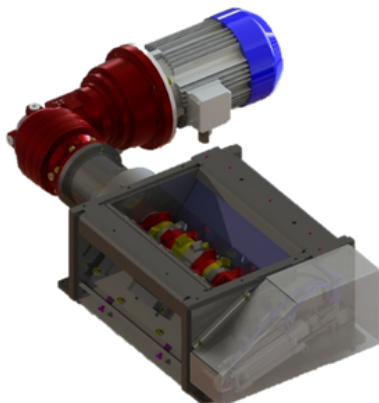
The SFH metal shredders allow an optimal reduction of your machining waste for a better recovery of the chips in order to their valorization in recycling channel.

*Reduces the volume of waste, thus limiting CO2 emissions by reducing rotation and transport costs. Increases productivity and performance over time.*



## CARACTÉRISTICS

- Equipped with removable knives mounted on a splined shaft
- Shaft driven by a double angular gear motor which allows an optimal reduction
- Lower part equipped with grids to calibrate the shredded waste



## BENEFITS

- Space saving
- Robust and simple construction
- Simple maintenance
- Rapid return on investment
- Enables the densification of the chips
- Detection and ejection of external components
- Long service life

## OPTIONS

- Automatic lubrication
- Fluid filtration
- Centralized systems
- All types of chips (wire, pellets, etc.)
- All types of materials (aluminum, titanium, brass, etc.)

# Operation of the metal crusher

<https://www.youtube.com/watch?v=4J1nHNo164s>

1

## Step 1

The waste is drawn onto the splined shaft allowing it to have a significant reduction

2

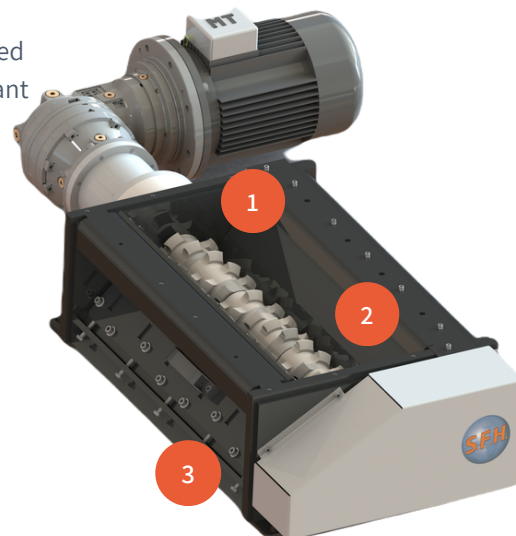
## Step 2

The chips are cut between the fixed combs mounted on the crusher and the knives of the shaft

3

## Step 3

The grates under the rotor allow the crushed chips to be calibrated



## OUR MODELS

### Single shredder\*:

- BCE200 - Capacity from 40 to 60kg/h
- BCE400 - Capacity from 80 to 120kg/h
- BCE600 - Capacity from 300 to 450kg/h

### Double shredder\*:

- DBCE400 - Capacity from 160 to 240kg/h
- DBCE600 - Capacity from 600 to 900kg/h

\* The size of the crusher depends on the shape, moisture content and material used.

Visit our website for a complete list of our products and for more information.

Website : [www.sfh.fr](http://www.sfh.fr)  
Email : [accueil@sfh.fr](mailto:accueil@sfh.fr)  
Phone : +33(0)47 792 19 92

