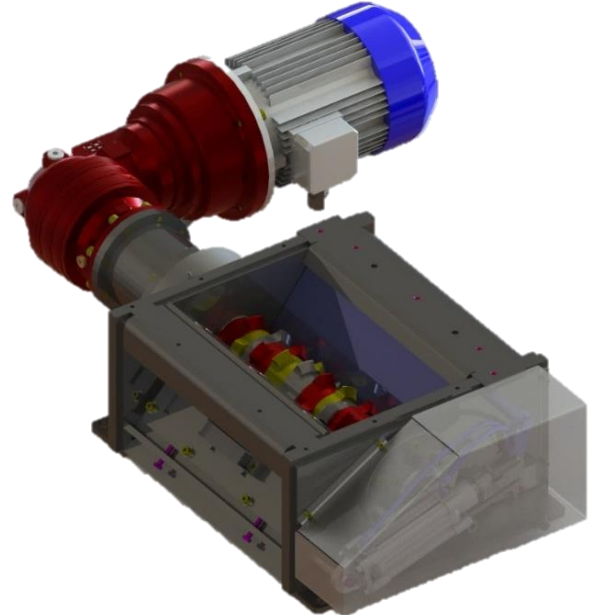


Crusher

➤ *Advantages:*

- ✓ Space saving
- ✓ Robust and simple construction
- ✓ Simple maintenance
- ✓ Rapid return in investment
- ✓ Allows to densify the chips



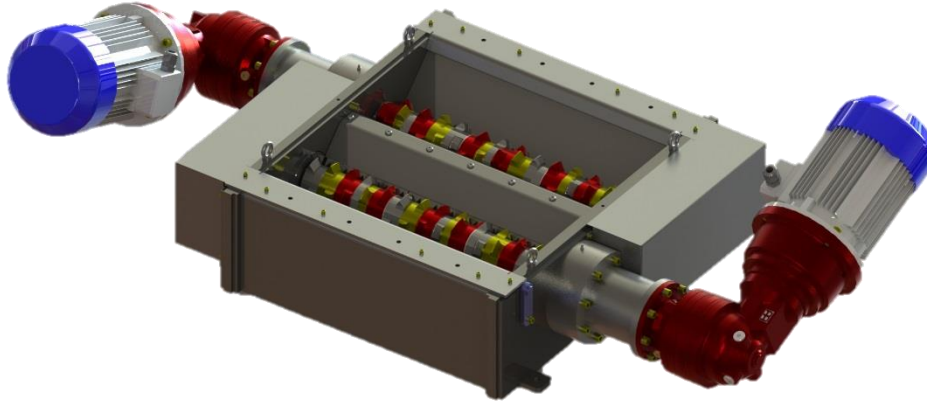
➤ *Specifications:*

		Simple			Double	
		BCE 200	BCE 400	BCE 600	DBCE 400	DBCE 600
Capacity (Kg/h)	Aluminum	≤ 40	≤ 80	≤ 300	≤ 160	≤ 600
	Steel	≤ 60	≤ 120	≤ 450	≤ 240	≤ 900
Machine dimension (mm)		935 x 825 x 250	1130 x 825 x 250	1350 x 825 x 250	1550 x 950 x 490	1750 x 950 x 490
Machine weight (Kg)		190	220	250	465	530
Grid (s)		From Ø5 to 30 in Hardox 400				
Engine (s) power (KW)		3 to 4	4 to 7,5	4 to 5,5	8 to 15	8 to 11
Electrical connection		400V 50Hz				

The capacity of the machine depends of the form, the humidity and the density of the chips.

➤ *Operation:*

The SFH crushers are equipped of removable knives arranged on a splined shaft. The assembly is drive by an angular and double global motor reducer for decrease the speed and increase the torque. On the crusher's frame, the combs are fixed for cut the chips during the rotation of the knives. In the lower parts, the grids are install below the rotor to grade the crushed chips.



➤ Options:

	Simple			Double	
o In option	200	400	600	400	600
Support		<input type="radio"/>		<input type="radio"/>	
Automatic lubrication		<input type="radio"/>		<input type="radio"/>	
Ejector for foreign parts		<input type="radio"/>		<input type="radio"/>	
Ejector for foreign parts with electrical cabinet		<input type="radio"/>		<input type="radio"/>	
Electrical cabinet		<input type="radio"/>		<input type="radio"/>	

